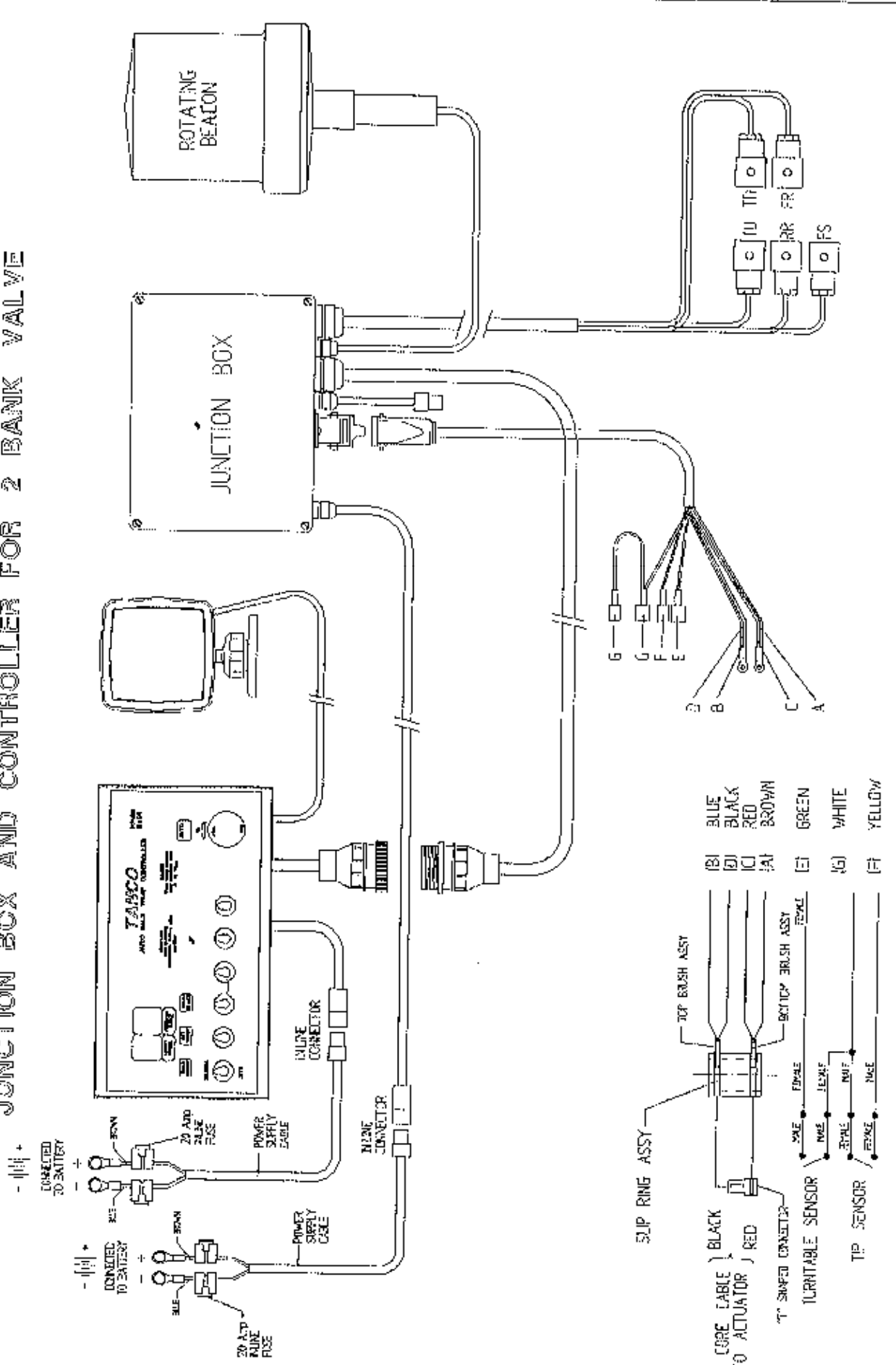


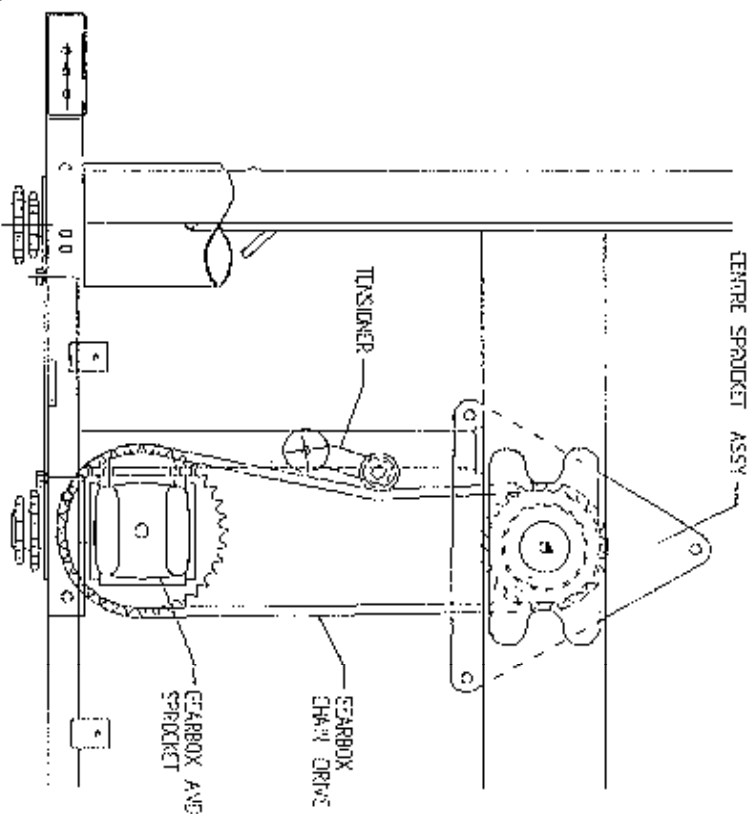
**TANCO AUTOWRAP  
250 ARC MODEL 1995  
OPERATORS HANDBOOK  
AND  
PARTS LIST  
WD65-250-ARC-H0595**

TANCO AUTOWRAP 250ARC/1050LRC/1250LRC MODELS (1995)  
 JUNCTION BOX AND CONTROLLER FOR 2 BANK VALVE



- BLUE (B)
- BLACK (BI)
- RED (R)
- BROWN (BR)
- GREEN (G)
- WHITE (W)
- YELLOW (Y)

TANCO AUTOWRAP CONSTANT INDEXING  
GEARBOX CHAIN DRIVE TENSIONING SYSTEM (1995)



CHAIN TENSIONING PROCEDURE

- 1 LOOSEN M10 BOLT SECURING CHAIN TENSIONER
- 2 TENSION CHAIN BY ADJUSTING TENSIONER USING SPANNER IN DIRECTION OF ARROW  $\frac{1}{2}$ " UNTIL SETTING OF  $1\frac{1}{2}$ " IS REACHED.
- 3 RE-TIGHTEN M10 BOLT TO SECURE TENSIONER IN POSITION.

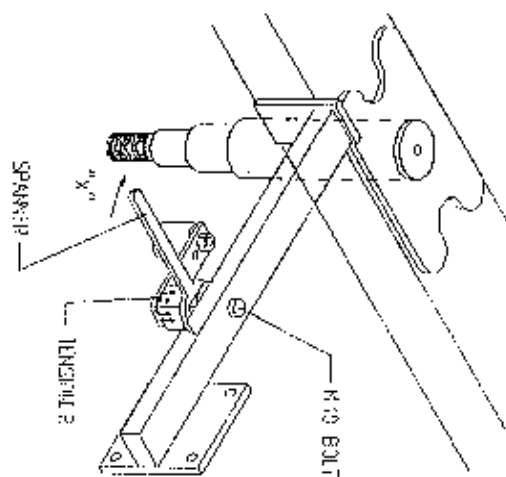
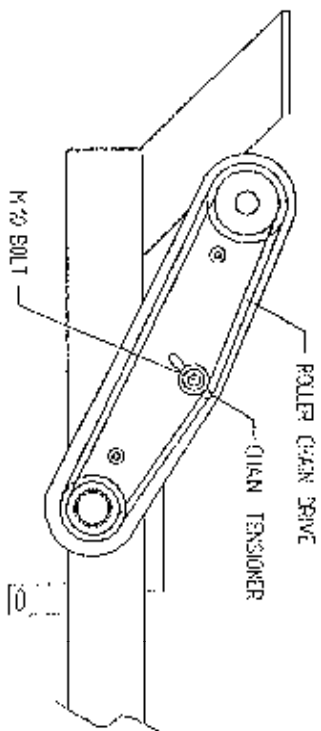


Fig. 2



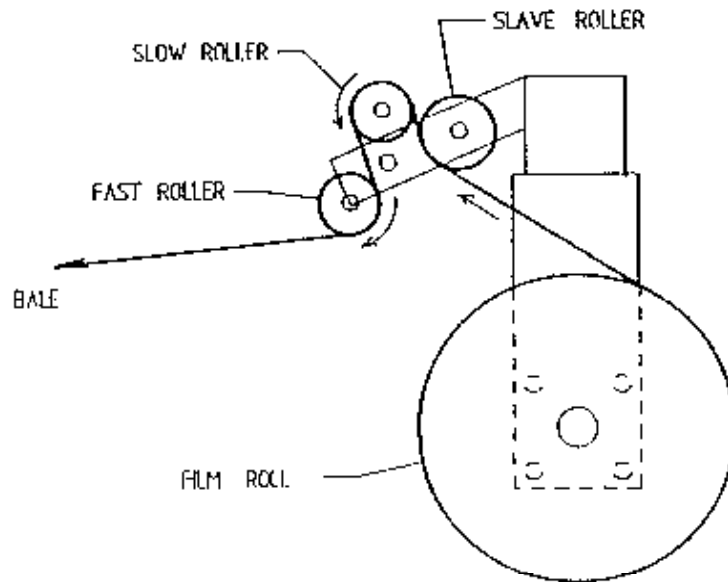
ROLLER CHAIN DRIVE TENSIONING SYSTEM

CHAIN TENSIONING PROCEDURE

- 1 LOOSEN M10 BOLT SECURING CHAIN TENSIONER
- 2 TENSION CHAIN BY MOVING CHAIN TENSIONER FORWARD IN SLOT
- 3 RE-TIGHTEN M10 BOLT TO SECURE TENSIONER IN POSITION.

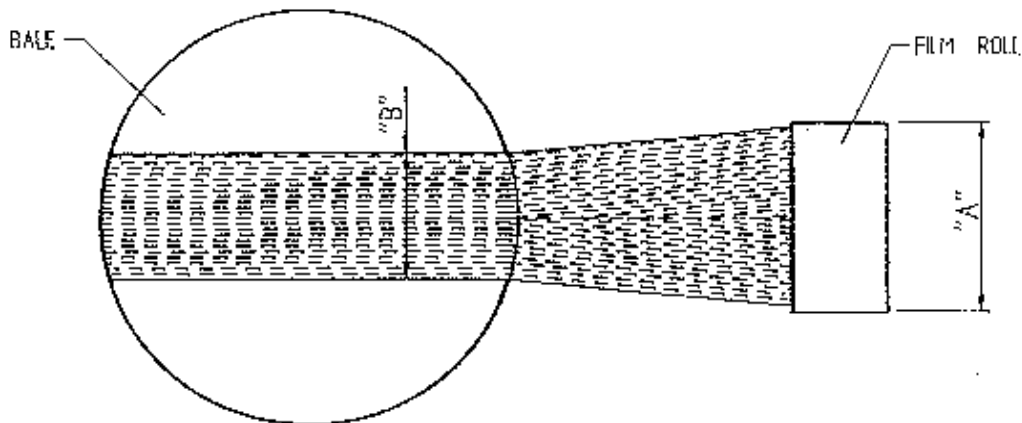
Fig. 3

# TANCO AUTOWRAP FILM THREADING DIAGRAM



## FILM ADJUSTMENT

CENTRE OF FILM ROLL MUST BE IN LINE WITH CENTRE OF BALE AND FILM MAST SHOULD BE VERTICAL.

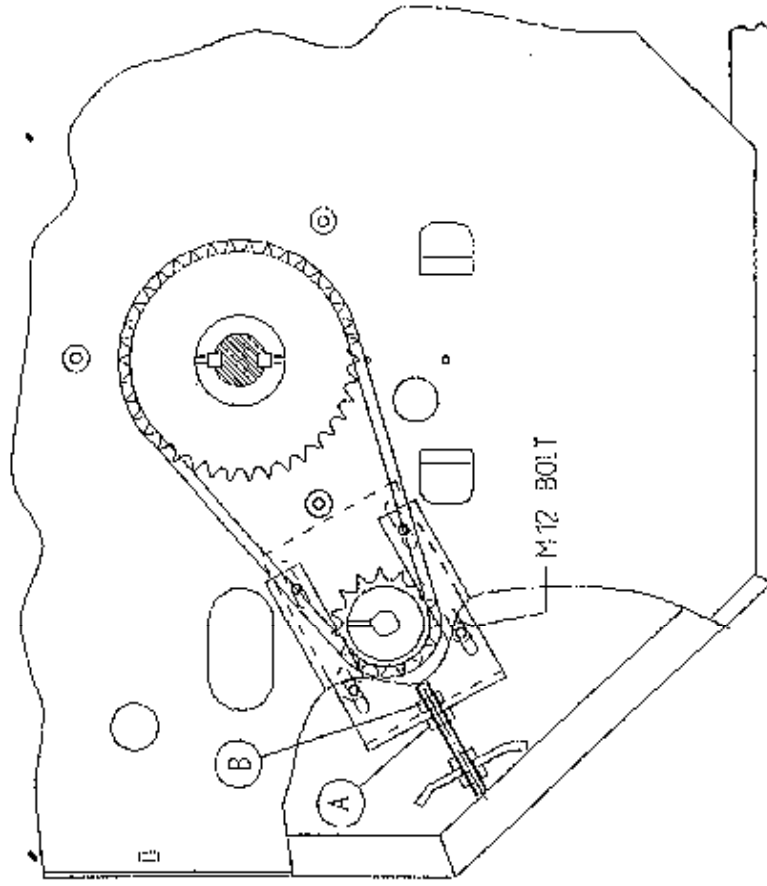


FILM ROLL WIDTH "A"	FILM WIDTH ON END OF BALE "B"
500 mm	400 mm
750 mm	600 mm

Fig. 1

FILE NAME W058-LA21

# TANCO AUTOWRAP 1995 MODEL TURNTABLE CHAIN DRIVE TENSIONING SYSTEM



## TENSIONING PROCEDURE

1. TIP UP MACHINE AND SUPPORT WITH A PROP.
  2. SLACKEN M12 CLAMPING BOLTS SLIGHTLY.
  3. SLACKEN LOCKNUT A.
  4. ADJUST NUT B UNTIL THERE IS 8 mm - 10 mm DEFLECTION ON CHAIN.
- 
- NOTE WARNING:**  
DO NOT OVER TENSION CHAIN AS MOTOR WILL BE DAMAGED
- 
5. TIGHTEN LOCKNUT A.
  6. TIGHTEN M12 CLAMPING BOLTS.

Fig. 8

2000

2000

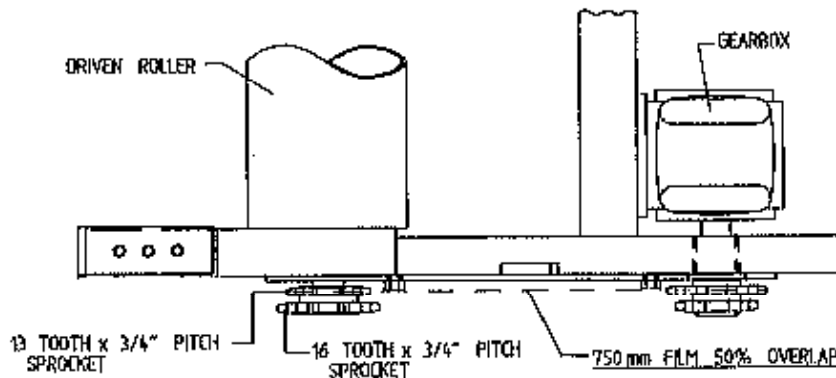
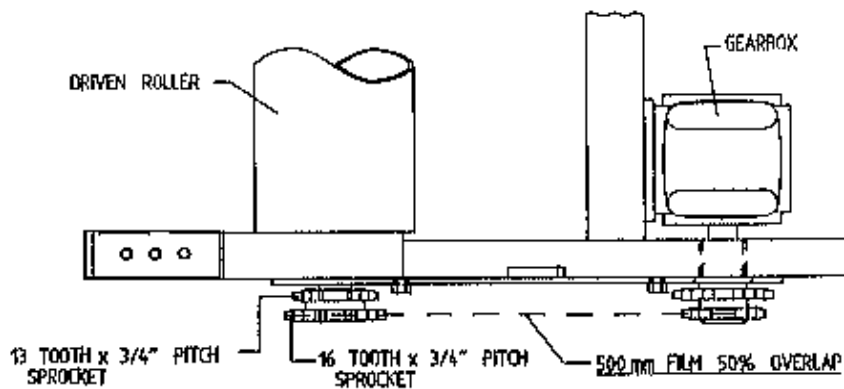
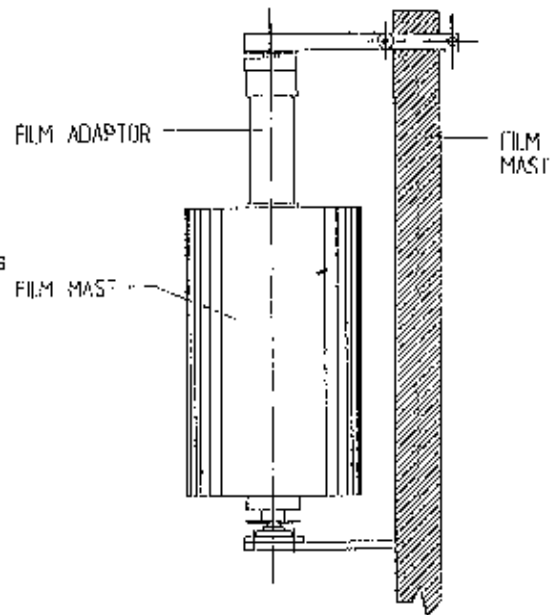
1

## FILM ADAPTOR

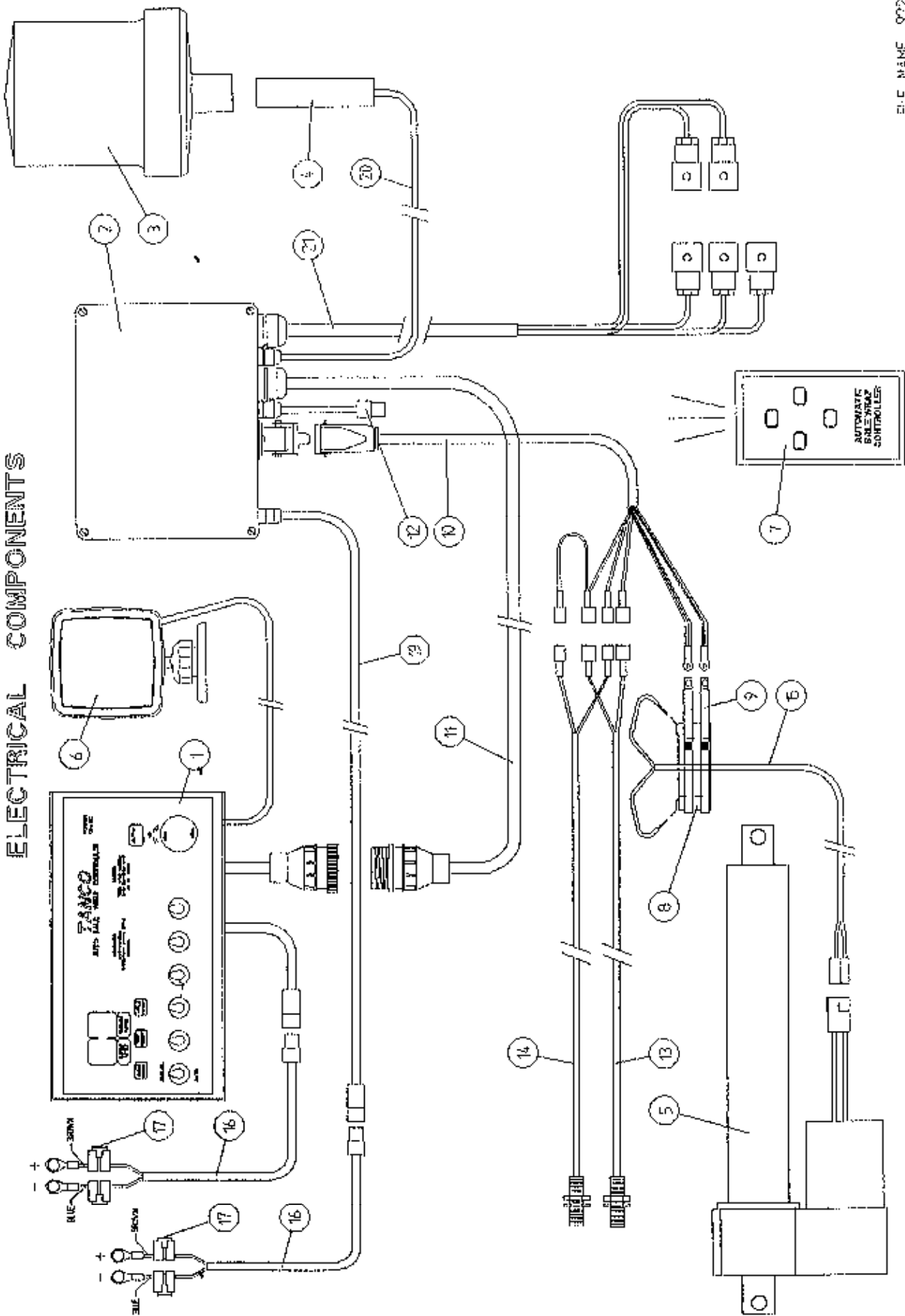
### OPERATING INSTRUCTION

500mm wide film rolls are used as standard on 250, 350, & 450 autowrap Models while 750mm wide film rolls are used as standard on 550 model. If however, it is found necessary to use 500mm wide rolls along with 750mm film dispenser the following instructions must be adhered to: (NOTE: Failure to do so will result in inadequate wrapping and bale spoilage).

1. Fit film adaptor to top end of 500mm wide film roll as shown opposite.
2. Remove drive chain from inner set of sprockets and fit to outer set of sprockets as shown in Fig. below.
3. Re-tension chain.
4. Adjust height of film mast so that centre of film roll is in line with centre of bale on the turntable.
5. Adjust bale wrap indicator setting from 15 to 22 revolutions for 120cm x 120cm bales. (See page for guide to bale wrap indicator settings. See Table 1).



TANCO AUTOWRAP 250ARC/1050LRC/1250LRC MODELS (1995)  
ELECTRICAL COMPONENTS





9227E

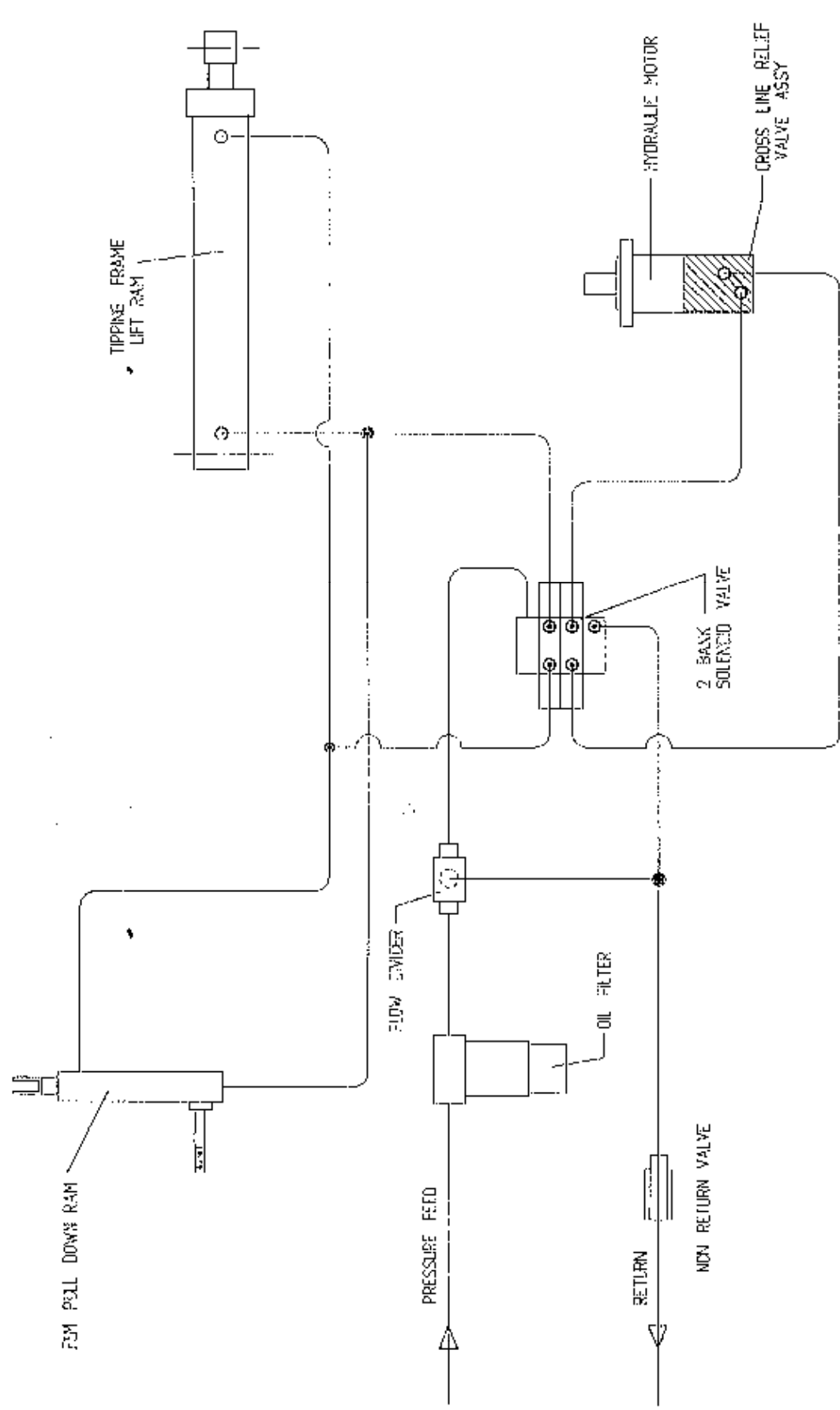
TANCO AUTOWRAP 250ARC/1050LRC/1250LRC MODELS 1995

ELECTRICAL COMPONENTS

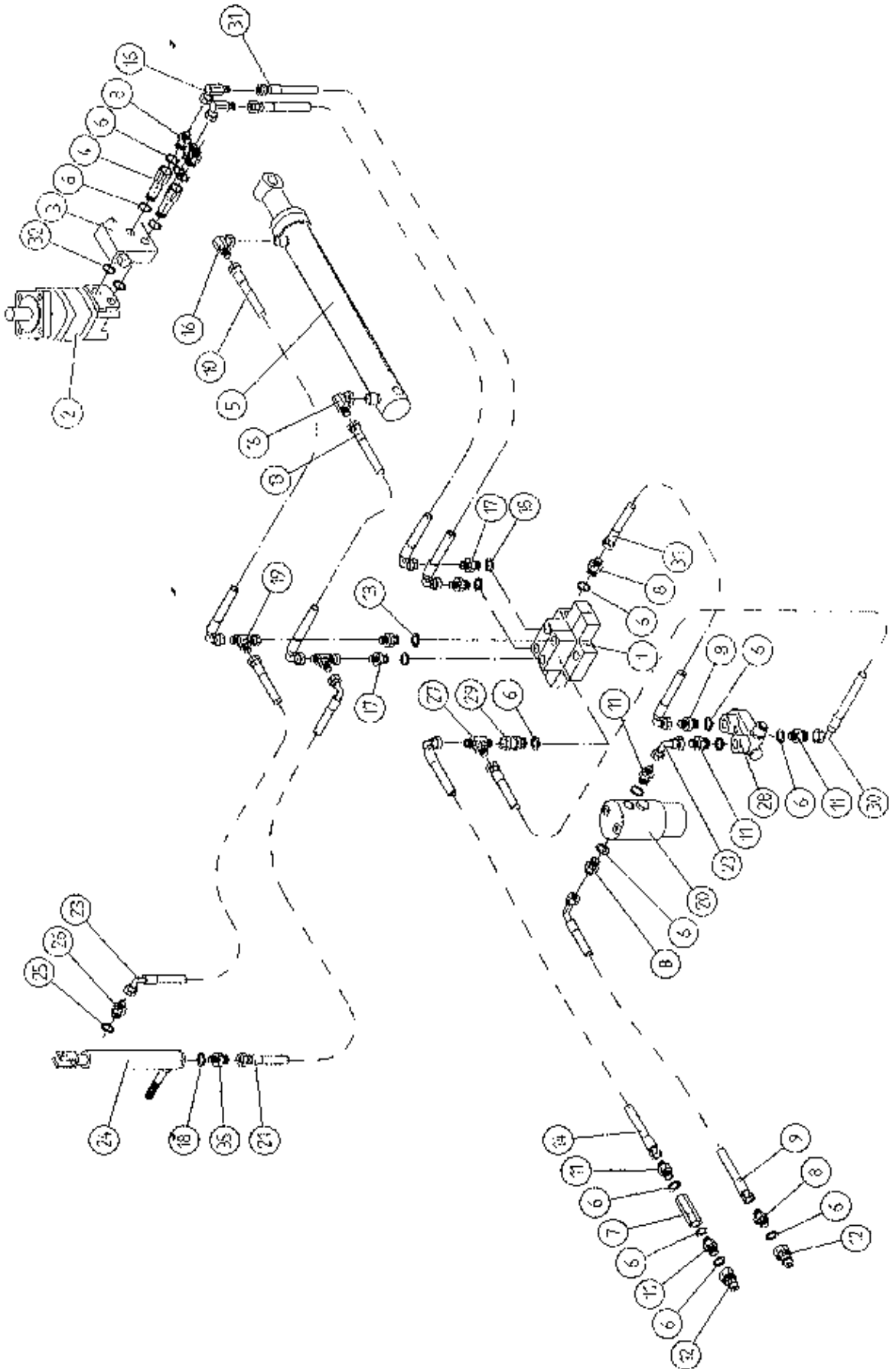
PARTS LIST.

<u>ITEM NO.</u>	<u>DESCRIPTION</u>	<u>QTY.</u>	<u>PART-NO.</u>
1.	CONTROL BOX	1	D606
2.	JUNCTION BOX (2 BANK VALVE)	1	ZDG-JB2
3.	ROTATING BEACON	1	Z05-18
4.	STEM	1	Z05-181
5.	WARNER LINEAR ACTUATOR	1	ZD605-510
6.	RECEIVER	1	D6071
7.	INFRA RED REMOTE CONTROL TRANSMITTER	1	D6072
8.	SLIP RING ASSY.	1	ZD605-308
9.	BRUSHES	1	ZD605-302
10.	7 CORE CABLE C/W HEARTING PLUG	1	D605-7C
11.	24 CORE INTER CONNECTING LEAD C/W CONNECTORS	1	D605-24C
12.	SYSTEM PRESSURE LEAD	1	ZD606-070
13.	ROTATING SENSOR	1	ZD606-RS
14.	TIP SENSOR	1	ZD606-TS
15.	TWO CORE CABLE FOR SLIP RING	1	D605-02C
16.	MAIN BATTERY LEAD	2	ZD606-030
17.	IN-LINE FUSE	3	ZD606-100
18.	MAIN BATTERY LEAD FOR JUNCTION BOX	1	ZD606-040
19.	MAIN LEAD FOR JUNCTION BOX	1	ZD606-050
20.	ROTATING BEACON LEAD	1	ZD606-090
21.	LOOM FOR VALVE C/W HIRSCHMAN	1	ZD606-080

TANCO AUTOWRAP 250 ARC/1050 LRC/1250 LRC MODEL 1995  
HYDRAULIC CIRCUIT DIAGRAM



TANCO AUTOWRAP 250 ARC/1050LRC/1250LRC MODEL 1995  
 HYDRAULIC COMPONENTS



WD64-PL50

TANCO AUTOWRAP 250 ARC / 1050 LRC / 1250 LRC MODELS 1995  
HYDRAULIC COMPONENTS

PARTS LIST

ITEM NO	DESCRIPTION	QTY.	PART-NO.
1.	2 BANK SPOOL SOLENOID VALVE	1	Z01-03-10-A2
2.	HYDRAULIC MOTOR (C.L.)	1	Z01-02-RF200
3.	CROSS LINE RELIEF VALVE	1	Z01-03-004
4.	1/2" B.S.P. BOTTOM BANJO BOLT (SPECIAL)	2	Z01-18-081
5.	HYD. RAM (TIPPING FRAME)	1	Z01-01-AR687
6.	1/2" DOWTY WASHER	19	Z01-04-03
7.	1/2" NON RETURN VALVE	1	Z01-03-017
8.	1/2" x 3/8" ADAPTOR	9	Z01-06-06-08
9.	72" ST/90 3/8" D/W HOSE	1	Z38-R2-72-S9
10.	48" ST/90 3/8" D/W HOSE	1	Z38-R2-48-S9
11.	1/2" x 1/2" ADAPTOR	3	Z01-06-08-08
12.	1/2" MALE END Q/R COUPLING	2	Z01-15-081
13.	36" ST/90 3/8" D/W HOSE	1	Z38-R2-36-S9
14.	96" ST/90 1/2" D/W HOSE	1	Z12-R1-96-S9
15.	30" ST/90 3/8" D/W HOSE	1	Z38-R2-30-S9
16.	3/8" MALE/FEMALE 90 ELBOW	4	Z01-14-015
17.	3/8" x 3/8" ADAPTOR	5	Z01-06-06-06
18.	3/8" DOWTY WASHER	5	Z01-04-02
19.	3/8" MALE x 3/8" MALE x 3/8" FEMALE 'T' PIECE	2	Z01-12-002
20.	FILTER	1	Z01-24-08
21.	84" ST/90 3/8" D/W HOSE	1	Z38-R2-84-S9
22.	3/8" X 3/8" ADAPTOR FITTED WITH 0.06" RESTRICTOR	1	Z01-03-40
23.	96" ST/90 3/8" D/W HOSE	1	Z38-R2-96-S9
24.	HYD RAM D/A (PULL DOWN ARM)	1	Z01-01-AW25
25.	1/4" DOWTY WASHER	1	Z01-04-01
26.	1/4" x 3/8" ADAPTOR	1	Z01-06-04-06
27.	1/2" MALE "T" PIECE	1	Z01-11-003
28.	INLINE FLOW DIVIDER	1	Z01-03-10-A7
29.	1/2" MALE x 1/2" FEMALE ADAPTOR	1	Z01-05-08-08
30.	20" ST/90 1/2" D/W HOSE	1	Z12-R2-19-S9
31.	108" ST/90 3/8" D/W HOSE	2	Z38-R2-608-S9
32.	COPPER WASHER	2	Z01-04-15

3.

4.

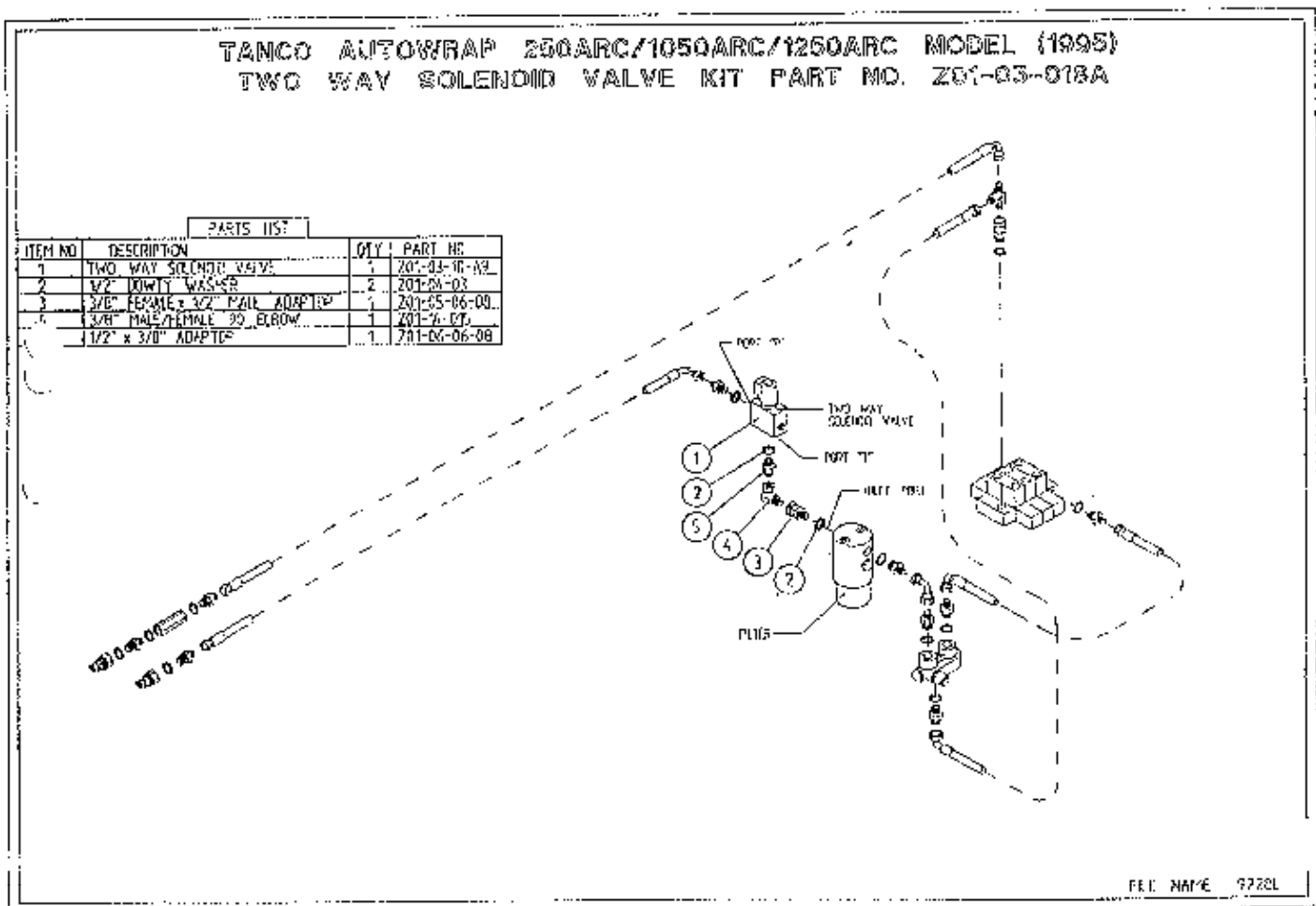
5.

6.

**INSTRUCTIONS FOR FITTING TWO WAY SOLENOID VALVE TO TANCO AUTOWRAP MODELS 250 ARC,**

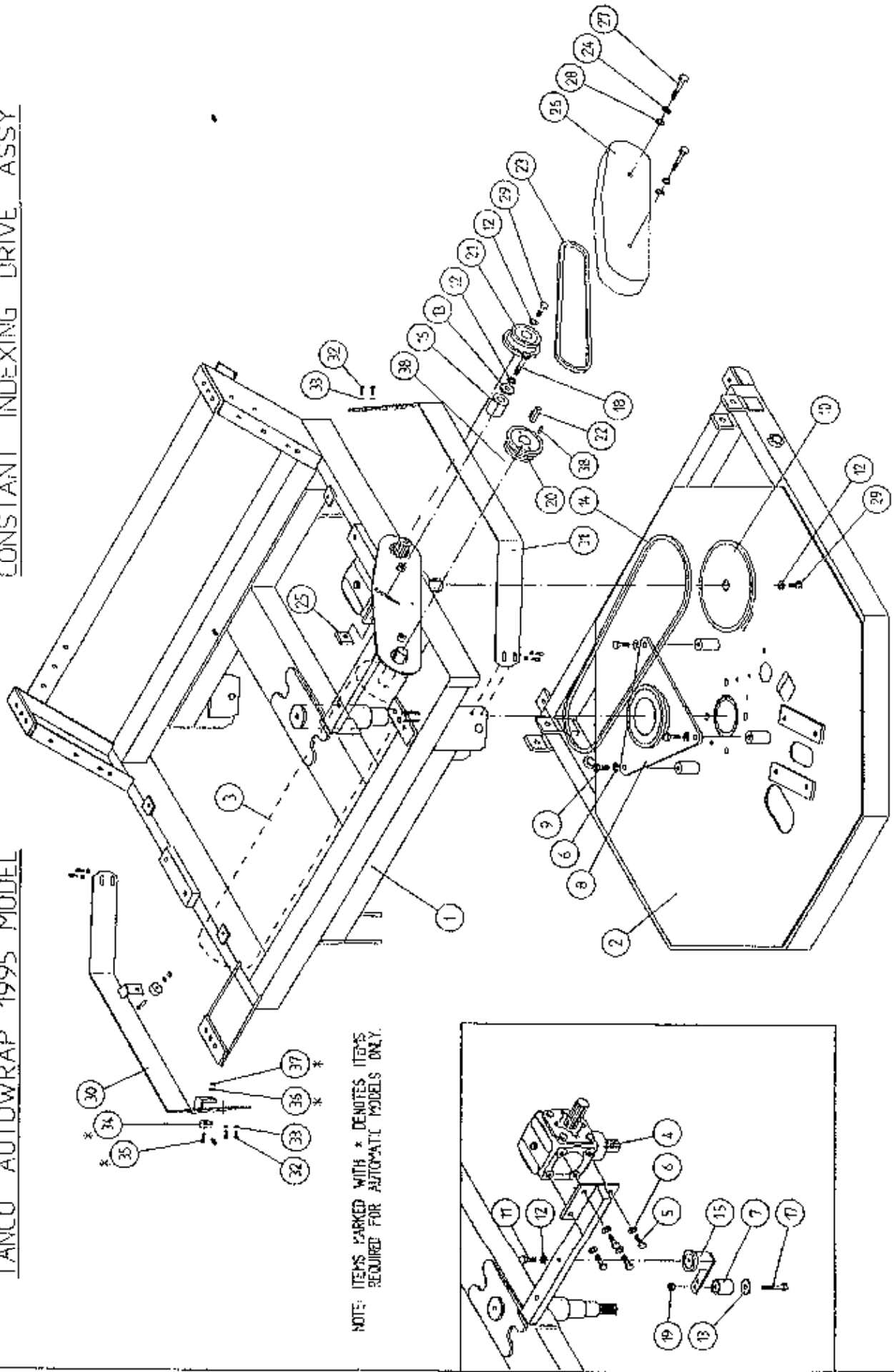
**REQUIRE WHEN OPERATING MACHINES ON TRACTORS WITH CLOSED CENTRE HYDRAULIC SYSTEMS.**

1. Disconnect S/90 hose from inlet port on oil filter.
2. Connect port "T" on solenoid valve assembly to inlet port on oil filter.
3. Reconnect St/90 hose to port "P" on solenoid valve.
4. Connect 2 pin female connector to existing 2 pin connector at junction box.
5. Ensure valve assembly does not foul any rotating parts.
6. Change the seventh controller function setting from n to j  
See instruction manual for further information.



TANCO AUTOWRAP 1995 MODEL

CONSTANT INDEXING DRIVE ASSY



NOTE: ITEMS MARKED WITH \* DENOTES ITEMS  
REQUIRED FOR AUTOMATI MODELS ONLY.

TANCO AUTOWRAP  
CONSTANT INDEXING DRIVE ASSEMBLY

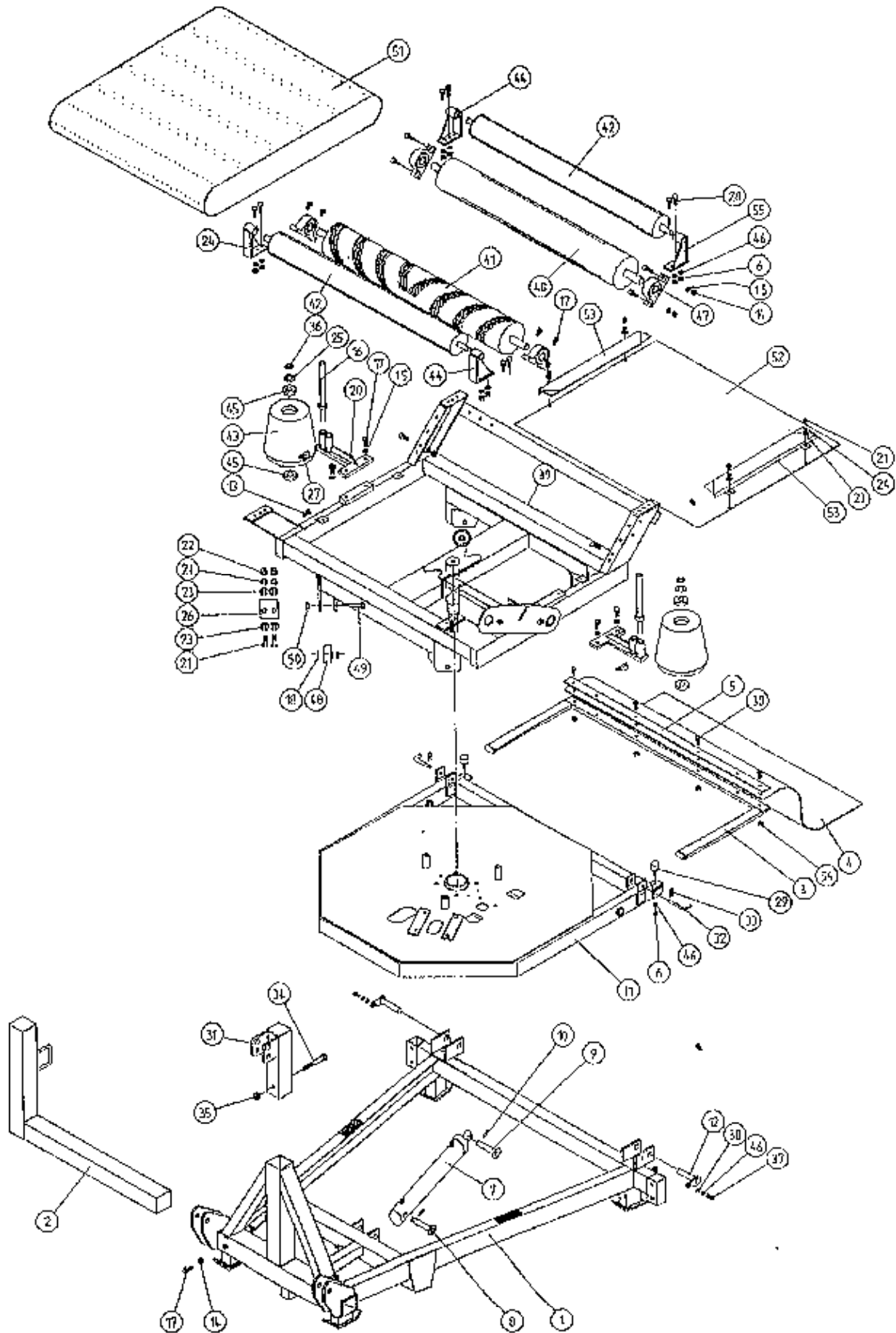
PARTS LIST

ITEM NO.	DESCRIPTION	QTY.	PART-NO
1	TURNTABLE ASSY.	1	WD64-TA
2	TIPPING FRAME ASSY.	1	WD64-TF
3	DRIVE ROLLER ASSY.	1	WD658-BRD
	GEAR BOX	1	Z01-25-300
5	M12 HEX HD SET x 30mm LONG	4	Z26-082S
6	1.2mm DIA SPRING WASHER	7	Z12-02-12
7	CHAIN TENSIONER	1	WD60-CT
3	CENTRE SPROCKET ASSY 27 TOOTH	1	WD64-CSA
	M12 HEX HD SET x 25mm LONG	3	Z26-081S
10	36 TOOTH SPROCKET	1	Z06-D64-468
11	M10 HEX HD SET x 25mm LONG	1	Z26-0611S
12	1.0mm DIA SPRING WASHER	4	Z12-02-10
13	RETAINING COLLAR	3	WD623-071
14	CHAIN 3/4" PITCH X 87 PITCHES	1	Z09-AW-5
15	ROSTA TENSIONING UNIT ARM	1	Z06-454
16	CHAIN TENSIONER	1	WD65-CT
17	M10 HEX HD BOLT x 65MM LONG	1	Z26-0671B
18	M10 HEX HD BOLT x 80MM LONG	1	Z26-0691B
19	M10 LOCKNUT	1	Z23-10
20	SPROCKET DOUBLE SIMPLEX 13T/16T KEYED	1	Z06-D64-1316K
21	SPROCKET DOUBLE SIMPLEX 13T/16T SPLINED	1	Z06-D65-1316S
22	KEY 5/16" x 5/16" x 32mm LONG	1	WD623-K32
23	CHAIN 3/4" PITCH X 62 PITCHES	1	Z09-AW-3
24	1/2" DIA STAR WASHER	2	Z10-01-121
25	LOCKING FLAT	1	WD623-060
26	CHAIN GUARD	1	WD60-CGC
27	M10 HEX HD SET x 70mm LONG	2	Z26-068B
28	10mm DIA FLAT WASHER	2	Z10-02-10
29	M10 HEX HD SET x 30mm LONG	2	Z26-062S
30	GUARD	1	WD64-TG
31	GUARD	1	WD64-020
32	M8 HEX HD SETS X 20MM LONG	8	Z26-020S
33	8MM DIA SPRING WASHER	8	Z12-02-08
34*	MAGNET	2	D6043
35*	M6 CSK HD SET X 35MM LONG	2	Z13-132
36*	6MM DIA FLAT WASHER	2	Z11-02-06
37*	M6 LOCKNUT	2	Z23-06
38	SPIRAL PIN	2	Z03-23-062

\* DENOTE ADDITIONAL ITEMS REQUIRED FOR AUTOMATIC MACHINES



# TANCO AUTOWRAP 250 ARC MODEL 1995

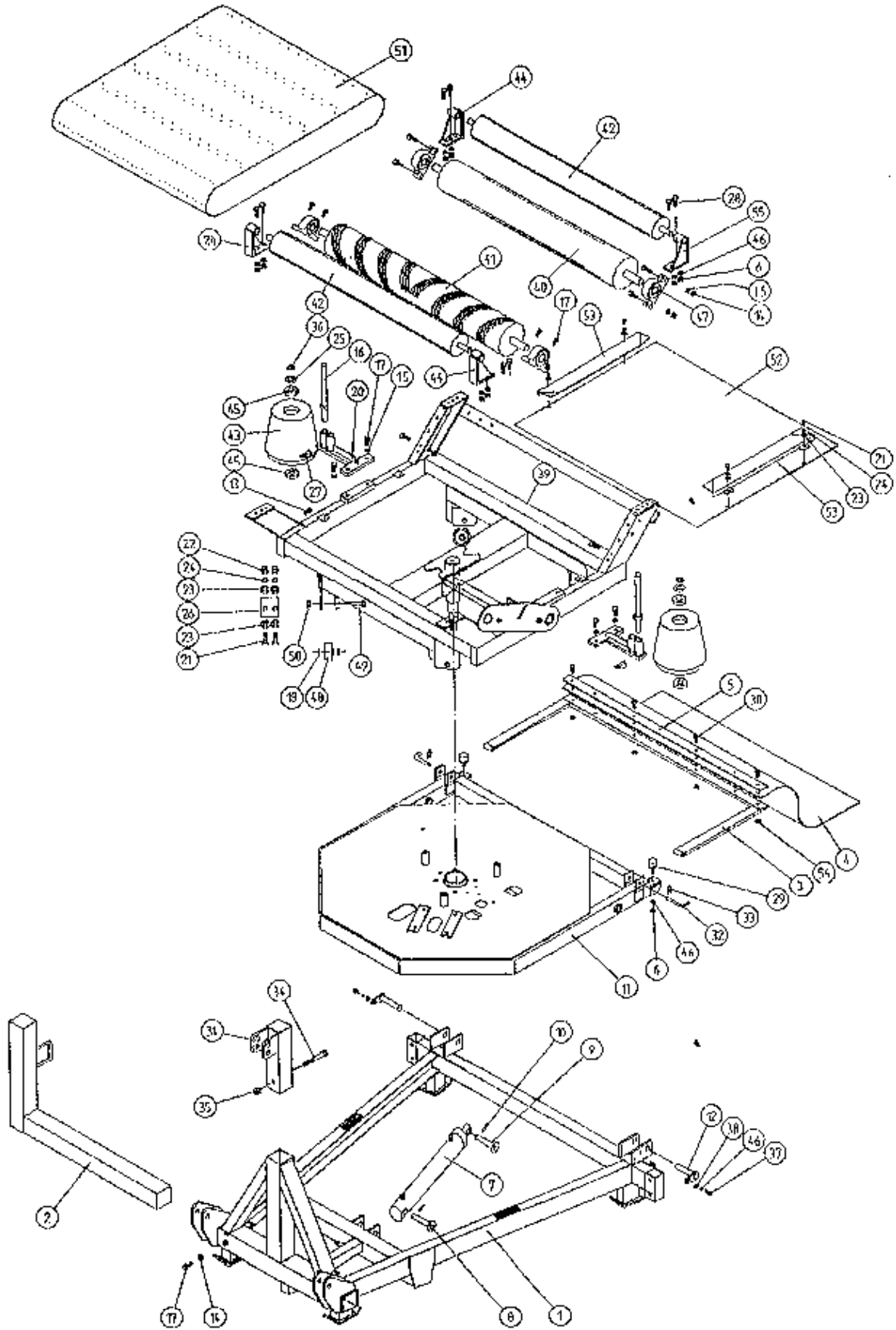


**TANCO AUTOWRAP 250 ARC MODEL (3PT. LINKAGE) 1995  
MAIN ASSEMBLY**

**PARTS LIST**

ITEM NO.	DESCRIPTION	QTY.	PART-NO.
1	3PT.LINKAGE FRAME ASSEMBLY	1	WD63-MF
2	DISPENSER BRACKET LOWER SUPPORT	1	WD63-DMLH
3	RUBBER MAT MOUNTING FRAME ASSEMBLY	1	WD63-MMF
4	RUBBER MAT	1	Z05-02AM
5	CLAMPING PLATE	1	WD63-1300
	M10 HEX NUT	14	Z18-10
	HYD. RAM	1	Z01-01-AR687
8	RAM BOTTOM PIVOT	1	Z03-02-330
9	RAM TOP PIVOT PIN	1	Z03-03-50
	2" X 1/4" SPLIT PIN	2	Z03-21-29
	TIPPING FRAME ASSY.	1	WD60-TFC
12	TIPPING FRAME PIVOT PIN C/W GREASE NIPPLE	2	Z03-01-905 Z39-60
13	M10 HEX HD SET X 30mm LONG	9	Z26-062S
14	M12 HEX NUT	4	Z18-12
15	12mm DIA SPRING WASHER	12	Z12-02-12
16	ROLLER SHAFT ASSEMBLY	2	WD60-RSA
17	M12 HEX HD. SETS X 40mm LONG	12	Z26-084S
18	SPACER	8	WD60-198
19	1/8" B.S.P. ST GREASE NIPPLE	4	Z39-60
20	END ROLLER MOUNTING BRACKET	2	WD60-ERM
21	M8 HEX HD BOLT X 20mm LONG	4	Z26-039S
22	M8 HEX NUTS	14	Z18-08
23	8mm DIA FLAT WASHERS (MUD FLAP)	8	Z11-02-081
24	8mm DIA SPRING WASHERS	8	Z12-02-08
25	THRUST WASHER	2	WD60-292
26	SCRAPER	2	WD60-705
	10mm "D" LINCH PIN	2	Z38-03
	M10 HEX HD SET X 35mm LONG	8	Z26-063S
29	BUFFER 56mm DIA X 40mm LONG	2	Z40-20
30	M8 HEX HD BOLT X 50MM LONG	4	Z26-045B
31	TOP LINK BRACKET ASSEMBLY	1	WD63-TLB
	BISSEL PIN	2	Z03-22-AW100
33	4MM "R." CLIP	2	Z36-02
34	M16 HEX HD BOLT X 120MM LONG	1	Z26-134B
35	M16 LOCKNUTS	1	Z23-16
36	CIRCLIP	2	Z28-525
37	M10 HEX HD. SET X 25mm LONG (TUFLOCK)	2	Z26-061S
38	10mm DIA MACHINED FLAT WASHER	2	Z11-02-10
39	TURN TABLE ASSY.	1	WD60-TAC
40	BIG ROLLER ASSY IDLER	1	WD610-BRI
41	BIG ROLLER ASSY. DRIVER	1	WD658-BRD
42	SMALL ROLLER ASSY	2	WD65-SMR

# TANCO AUTOWRAP 250 ARC MODEL 1995

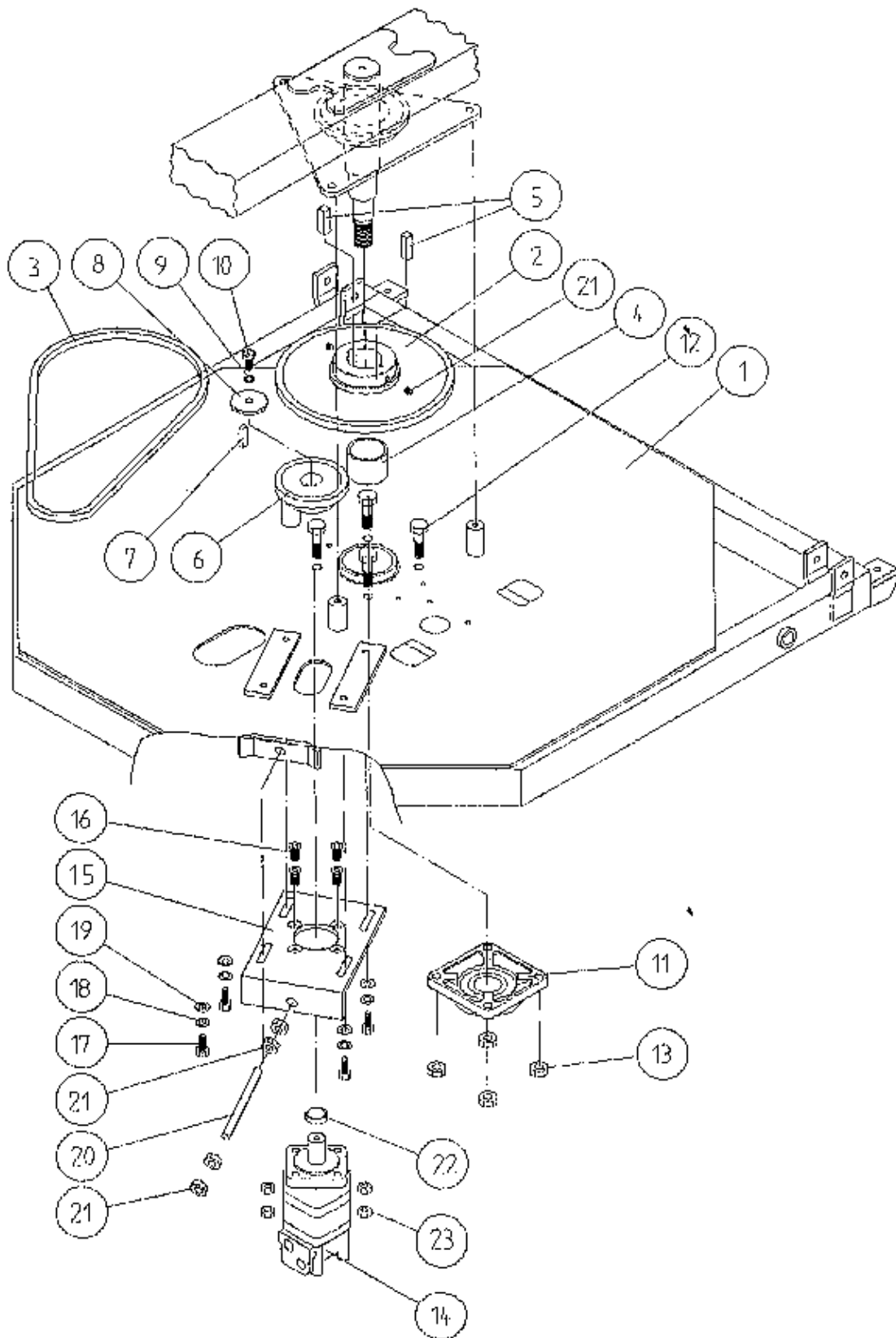


**TANCO AUTOWRAP 250 ARC MODEL (3PT. LINKAGE) 1995  
MAIN ASSEMBLY**

**PARTS LIST**

43	SIDE ROLLER	2	Z06-AWR
44	ROLLER MTG. BRACKET	2	WD60-TRMBR
45	BEARING (25mm I.D.)	4	Z06-AWRB-93
46	10mm DIA SPRING WASHERS	17	Z12-02-10
47	1 1/4" PILLOW BLOCK BEARING C/W CAM LOCK COLLAR	4	Z06-485
48	SUPPORT WHEELS (4" DIA) AXLE ASSY. C/W GREASE NIPPLE	4	Z06-466
		4	Z03-22-AW/AX
			Z39-60
50	M20 LOCKNUTS	4	Z23-20
51	1130MM WIDE X 2450MM LONG X 1/4" FLAT BELT	1	Z05-02AWS
	TURN TABLE COVER PLATE	1	WD60-093
53	BELT GUIDE ASSY	1	WD64-BG
54	M8 LOCKNUTS	4	Z23-08
55	ROLLER MTG. BRACKET	2	WD60-TRMBL

# TANCO AUTOWRAP 1995 MODEL TURNTABLE CHAIN DRIVE ASSEMBLY



FILE NAME: WD64 PL9

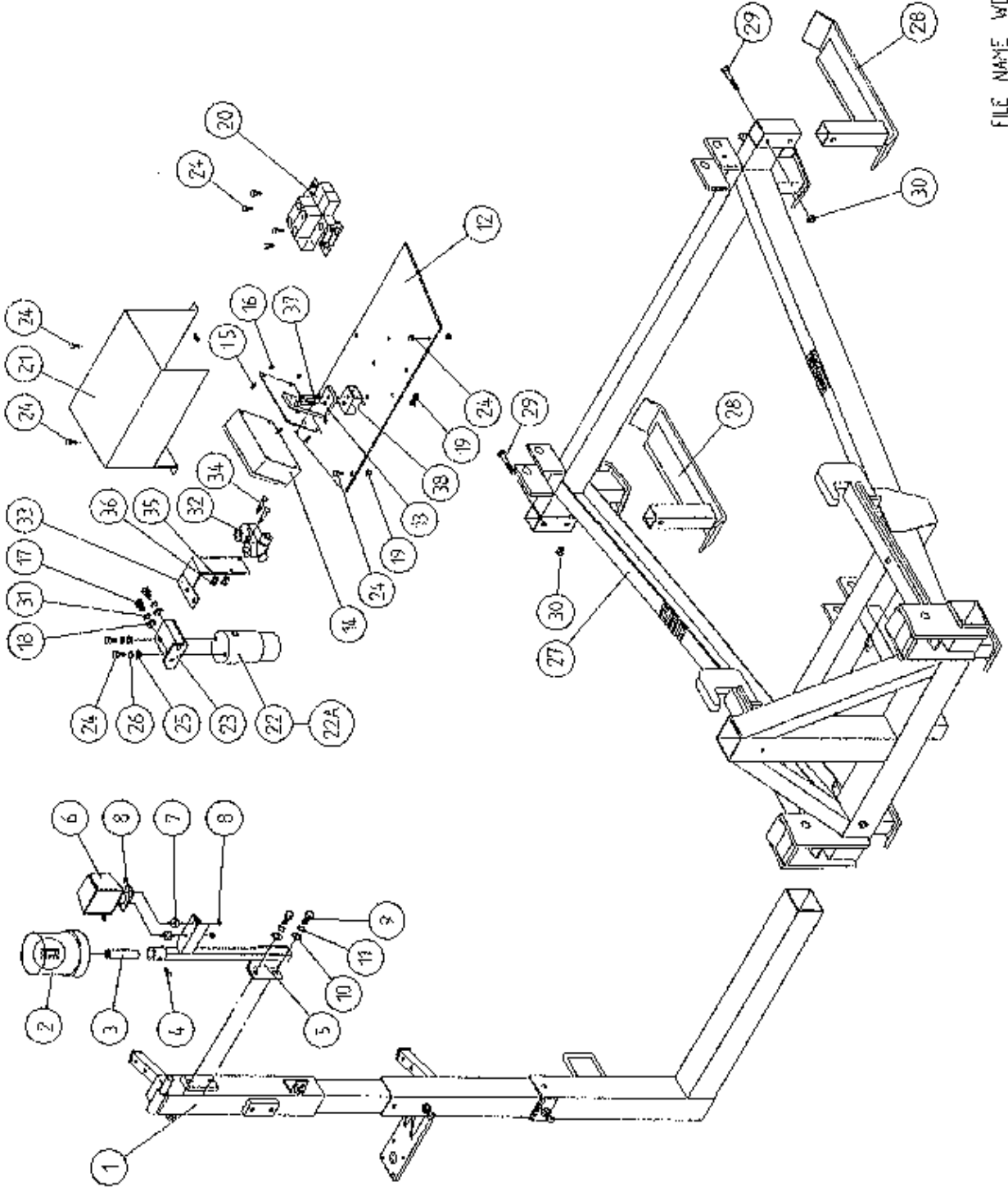
WD64-PL9

TANCO AUTOWRAP 1995 MODEL

TURNTABLE CHAIN DRIVE ASSEMBLY

ITEM NO	DESCRIPTION	QTY	PART NO
1	TIPPING FRAME ASSY	1	WD64-TF
2	38 TOOTH X 1" PITCH SPROCKET	1	Z06-D64-38
3	CHAIN 1" PITCH X 54 PITCHES	1	Z09-AW6
4	SPINDLE SPACER	1	WD64-040
5	KEY 5/8" SQ X 50MM LONG	2	WD64-052
6	15 TOOTH X 1" PITCH SPROCKET	1	Z06-I60-046
7	KEY 5/16" SQ X 45MM LONG	1	WD64-053
8	LOCKING COLLAR	1	WD623-071
9	10MM DIA SPRING WASHER	1	Z12-02-10
10	3/8" UNC HEX HD SET Z 1" MM LONG	1	Z27-023S
11	2" DIA FLANGE BEARING C/W CAN LOCK COLLAR	1	Z06-49EC
12	5/8" UNF HEX HD SET X 2" LONG	4	Z31B-064
13	5/8" UNF LOCKNUT	4	Z20-10
14	HYDRAULIC MOTOR	1	Z01-02-RF200
15	HYDRAULIC MOTOR MOUNTING PLATE	1	WD64-001
16	M12 X 40MM ALLEN HD O/S SCREW	4	Z13-5-12
17	M12 HEX HD SET X 30MM LONG	4	Z26-082S
18	12MM DIA SPRING WASHER	4	Z12-02-12
19	12MM DIA FLAT WASHER	4	Z10-02-12
20	M16 THREADED BAR X 150MM LONG	1	WD64-038
21	M16 HEX NUTS	4	Z18-16
22	SPACER	1	WI60-093
23	M12 LOCKNUTS	4	Z23-12

TANCO AUTOWRAP 250 ARC MODEL 1995  
SOLENOID VALVE & JUNCTION BOX ASSY



WD64-PL51

TANCO AUTOWRAP 250 ARC MODEL 1995

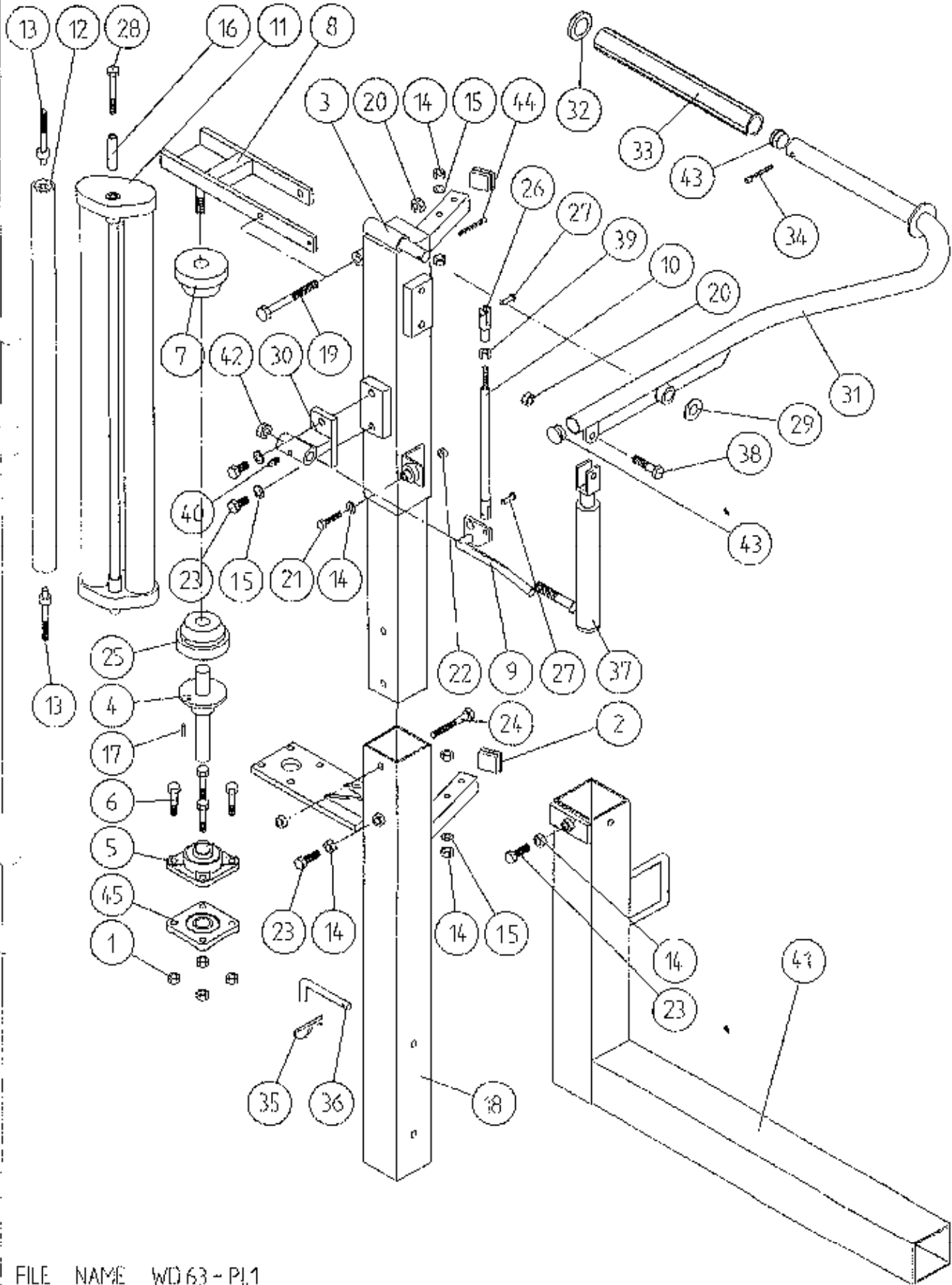
SOLENOID VALVE & JUNCTION BOX ASSY

PARTS LIST

ITEM NO.	DESCRIPTION	QTY.	PART-NO.
1.	FILM MAST ASSEMBLY	1	
2.	ROTATING BEACON	1	Z05-18
3.	STEM C/W CABLE	1	Z05-181
4.	M8 x 10mm GRUB SCREW	1	Z28-008
5.	BEACON MOUNTING BRACKET	1	WD63-BMB
6.	RECEIVER	1	D6071
7.	RUBBER BUFFER	2	Z40-27
8.	M6 LOCKNUT	4	Z23-06
9.	M12 HEX HD BOLT x 30mm	2	Z26-082S
10.	12mm DIA FLAT WASHER	2	Z10-02-12
11.	12mm DIA SPRING WASHER	2	Z12-02-12
12.	SOLENOID VALVE MOUNTING PLATE	1	WD63-1027
13.	JUNCTION BOX MOUNTING BRACKET	1	WD63-JMB
14.	JUNCTION BOX	1	ZDC-JB2
15.	M4 ALLEN HD SOCKET SCREW x 16mm	4	Z26-006
16.	M4 LOCKNUT	4	Z23-04
17.	M10 HEX HD SET x 25mm	2	Z26-0611S
18.	10mm DIA FLAT WASHER	2	Z10-02-10
19.	M8 LOCKNUT	8	Z23-08
20.	2 BANK SOLENOID VALVE	1	Z01-03-10-A2
21.	VALVE & JUNCTION BOX COVER	1	WD63-UC
22.	OIL FILTER	1	Z01-24-08
22A.	OIL FILTER ELEMENT	1	Z01-24-08E
23.	FILTER MOUNTING BRACKET	1	WD63-1053
24.	M8 HEX HD SET x 25mm	8	Z26-040S
25.	8mm DIA FLAT WASHER	2	Z10-02-08
26.	8mm DIA SPRING WASHER	2	Z12-02-08
27.	3PT LINKAGE FRAME	1	WD610-LF
28.	STABILISING LEG ASSY	2	WD63-SLA
29.	M12 HEX HD BOLT x 80mm	2	Z26-0901B
30.	M12 LOCKNUTS	2	Z23-12
31.	10mm DIA SPRING WASHER	2	Z12-02-10
32.	FLOW DIVIDER	1	Z01-03-10-A6
33.	FLOW DIVIDER MOUNTING BRACKET	1	WD65-FDM
34.	M6 ALLEN HD SOCKET SCREW 50MM	2	Z13-020-50
35.	6MM DIA MUD FLAP WASHER	2	Z11-02-061
36.	M6 LOCKNUT (NYLOCK)	2	Z23-06
37.	M8 HEX HD BOLT X 65MM LONG	2	Z26-048B
38.	PACKER (JUNCTION BOX)	1	WD612-034



TANCO AUTOWRAP 250 ARC MODEL 1995  
FILM DISPENSOR SYSTEM



FILE NAME WD 63 - P1.1

TANCO AUTOWRAP 250 ARC MODEL 1995  
FILM DISPENSING SYSTEM

PARTS LIST

ITEM NO.	DESCRIPTION	QTY.	PART-NO.
1.	M10 LOCKNUTS	4	Z23-10
2.	(PLASTIC CAPS TO SUIT 40 x 40 x 3 x RHS)	2	Z32-07
3.	DISPENSER MOUNTING (UPPER)	1	WD60-DMUH
4.	FILM SPOOL ASSEMBLY	1	WD60-SPO
5.	1" DIA FLANGE BEARING C/W CAM LOCK	1	Z06-48EC
6.	M10 HEX HD BOLT X 50mm LONG	4	Z26-066B
7.	CONE (TOP) C/W BALL BEARINGS	1	Z06-45-01
8.	CLAMP ASSEMBLY	1	WD60-DMCA
9.	LEVER ASSEMBLY	1	WD60-DMLA
10.	LINK ASSEMBLY	1	WD60-DMLK
11.*	FILM DISPENSER UNIT MK 8 (70% STRETCH)	1	D615
12.	SLAVE ROLLER ASSY (LONG)	1	Z06-SR95-L
13.	SLAVE ROLLER PIVOT	2	WD64-SRP
14.	M12 HEX NUTS	7	Z18-12
15.	12mm DIA SPRING WASHER	2	Z12-02-12
16.	SLEEVE	1	D52012-95
17.	1/4" DIA TENSION PIN x 3/4" LONG	1	Z03-20-062
18.	DISPENSER MOUNTING (LOWER)	1	WD60-DMLH
19.	M12 HEX HD BOLT x 130mm LONG	1	Z26-094B
20.	M12 LOCKNUT	3	Z23-12
21.	M8 HEX HD BOLT x 35mm LONG	1	Z26-042S
22.	M8 LOCKNUT	1	Z23-08
23.	M12 HEX HD SET x 30mm LONG	3	Z26-082S
24.	M12 HEX HD BOLT x 100mm LONG	1	Z26-092B
25.	CONE (BOTTOM)	1	Z06-45-02
26.	CLEVIS (M10)	1	Z49-335
27.	PIN (5/16" DIA) C/W CLIP	2	Z49-337
28.	M12 HEX HD BOLT x 80mm LONG	1	Z26-0901B
29.	3/4" DIA FLAT WASHER	1	Z10-02-19
30.	FILM PULL DOWN BRACKET ASSY	1	WD65-FPDB
31.	FILM PULL DOWN ARM ASSY	1	WD65-FPDA
32.	RETAINING WASHER	1	WD60-859
33.	ROLLER	1	WD60-866
34.	2" x 1/4" SPLIT PIN	1	Z03-21-29
35.	4mm "R" CLIP	1	Z36-02
36.	BISSSEL PIN (110mm LONG)	1	WD60-861
37.	HYDRAULIC RAM	1	Z01-01-AW25
38.	M12 HEX HD SET x 50mm LONG	1	Z26-086S
39.	5/16" UNF HEX NUT	1	Z15-05
40.	1/8" BSP ST GREASE NIPPLE	1	Z39-60
41.	DISPENSER BRACKET LOWER SUPPORT	1	WD63-DMLH
42.	M16 LOCKNUT	1	Z23-16
43.	1" GB PLASTIC CAP	2	Z32-14
44.	1/2" x 3/16" SPLIT PIN	1	Z03-20-05
45.	1" DIA FLANGE BEARING	1	Z06-48

\* NOTE: From Dispenser Serial no. 15370 onwards item no 11 should read  
FILM DISPENSER UNIT MK 9 (70% STRETCH) PART NO: D616

## FAULT FINDING

### PROBLEMS.

- |   |  |
|---|--|
| 1. Drive Roller and Bale belt not driving       | Check and replace shear Pins in sprocket on drive roller.  |
| 2. Film Breaking                                | Wash off dispenser and slave rollers Change roll of film. Use recommended films only.  |
| 3. Film not wrapping evenly on bale.            | Adjust film mast so centre of film roll is aligned with centre of bale .   |
| 4. Film Tearing on Ramp.                        | Check for sharp edges and remove.  |
| 5. Bale Skidding on Ramp.                       | Fit Hessian Bag or piece of carpet to Ramp.  |
| 6. Film Dispenser not Pre-Stretching Film.      | Check that both Rollers turn when one is turned by hand. If not, fit new gears or replace unit.  |
| 7. Tyres coming off 4" platform Support Wheels. | Replace Wheels - Reduce speed below 30 r.p.m. - Do not grease path of wheels on platform. Check that bale does not get trapped between arms and turntable when being loaded.<br><br>If this happens lower arm and start again. |

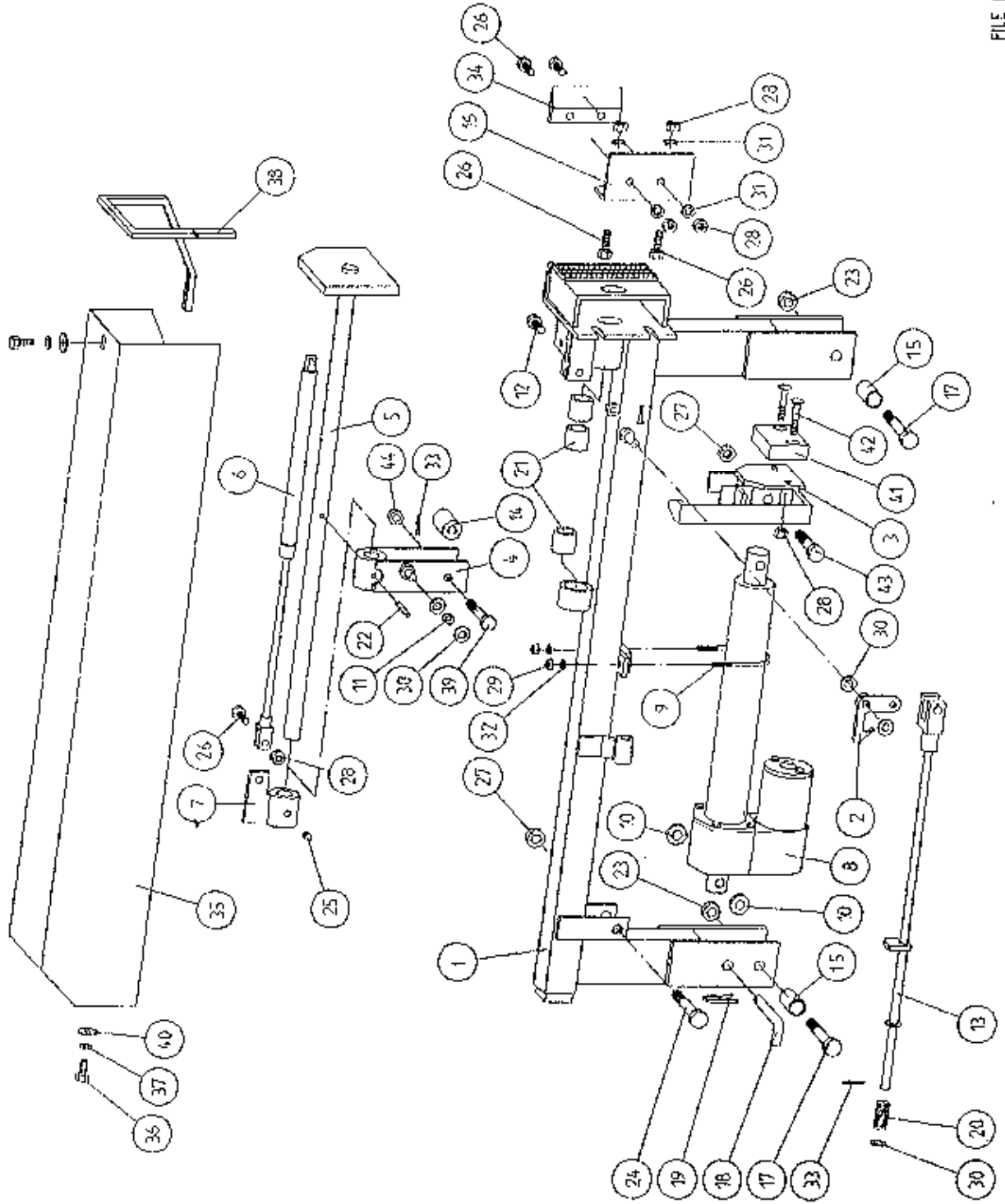
## FAULT FINDING

### 8. MAIN BELT MOVING SIDeways

- (i) Ensure vertical rollers (plastic) are in tight on the bale.  
Remember that the bale will reduce in size during wrapping and, on the round bales in particular, the corners will become rounded so that the bale will tend to move sideways due to centrifugal forces. Now, if the plastic rollers are too far apart, the bale will move against one of the plastic rollers causing the belt to move in the opposite direction. Always adjust the vertical plastic rollers so that they keep the bale central on the belt.
- (ii) Adjust bale stop on lift arm so that bale is loaded centrally onto platform.
- (iii) Check that bale belt is fitted so arrow points in direction of travel.
- (iv) Check that both 8" rollers underneath the bale belt are parallel to each other. Remember the golden rule - a belt will always move up a slope:  
So, if the belt continually moves to one side, adjust idler roller to a narrower setting on the opposite side to which the belt travels.
- (v) Check that gripface strips are securely fixed to the roller and have not moved out of alignment.
- (vi) Check that it is the same measurement each side by running a string around the belt and measuring it. If one side is longer than the other replace the belt.

# TANCC AUTOWRAP CUT AND START UNIT (1995)

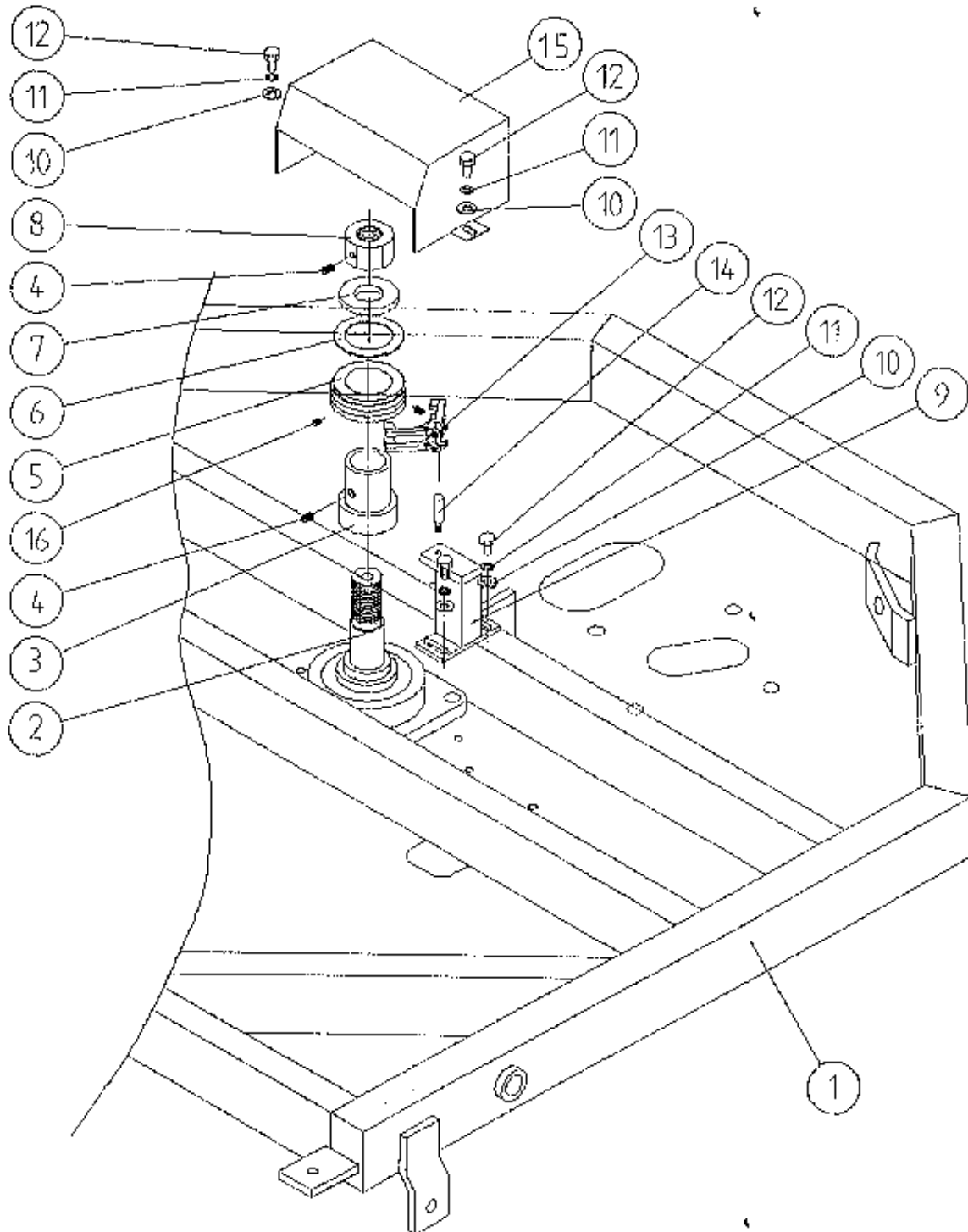
# MAIN ASSEMBLY



**TANCO AUTOWRAP  
CUT AND START UNIT (1995)  
PARTS LIST**

ITEM NO	DESCRIPTION	QTY	PART-NO.
1.	MAIN MOUNTING FRAME ASSY	1	WD605-MF1
2.	LATCH ASSY.	1	WD605-LA
3.	PUSH PLATE / POINTER ASSY.	1	WD605-PPP
4.	GUIDE ASSY	1	WD605-GD1
5.	PLUNGER ASSY	1	WD605-PL1
6.	GAS SPRING	1	Z07-47
7.	GAS SPRING MOUNTING BRACKET	1	WD605-GSM
8.	WARNER LINEAR ACTUATOR D11 10B5 08	1	ZD605-510
9.	"U" BOLT	1	WD605-45
10.	SPACER 1" X OD X 1/2" ID X 6mm LONG	2	WD605-65
11.	SLEEVE 1/2" DIA O.D. X 13/32" DIA I.D.	1	WD605-47
12.	M8 HEX HD SET X 35mm LONG	1	Z26-042S
13.	TRIGGER ASSEMBLY	1	WD605-TRG
14.	COLLAR 1" DIA BRIGHT RD. X 41.5mm LONG	1	WD605-51
15.	SPACER	1	WD605-100
16.	BLADE GUARD/MOUNTING BRACKET	1	WD605-105
17.	M12 HEX HD BOLT X 80mm LONG	2	Z26-0901B
18.	BISSEL PIN	1	Z03-22-AW100
19.	4mm "R" CLIP	1	Z36-02
20.	SPRING 16mm O.D X 1.5mm WIRE X 48mm LONG	1	Z07-34
21.	OILITE OIL RETAINING BUSH 1 1/8" O.D.	3	Z06-105
22.	1 1/2" X 1/4" DIA TENSION PIN	1	Z03-20-07
23.	M12 LOCKNUTS	2	Z23-12
24.	M12 HEX HD BOLT X 65mm	1	Z26-0882B
25.	M8 GRUB SCREW	1	Z28-008
26.	M8 HEX HD SET X 25mm	3	Z26-040S
27.	M12 BINX LOCKNUT	4	Z23-12BX
28.	M8 LOCKNUT	8	Z18-08
29.	M6 LOCKNUT (NYLOCK)	2	Z23-06
30.	10mm DIA FLAT WASHER	10	Z11-02-10
31.	8mm DIA FLAT WASHER	5	Z11-02-08
32.	6mm DIA FLAT WASHER	2	Z11-02-06
33.	3mm DIA SPLIT PIN	2	Z03-21-02
34.	BLADE	1	WD605-104
35.	MAIN GUARD	1	WD605-MG
36.	M8 HEX HD SET X 20mm LONG	2	Z26-039S
37.	8mm DIA SPRING WASHER	9	Z12-02-08
38.	EDGING STRIP	1	Z44-12
39.	M10 HEX HDSET X 20mm	2	Z26-060S
40.	8mm DIA FLAT WASHER 1" O.D.	4	Z11-02-081
41.	PACKER	1	WD605-133
42.	M8 X 40 COUNTER SUNK BOLT	2	Z13-5-08X40
43.	M12 HEX HD BOLT X 50mm LONG	1	Z26-086B
44.	M10 LOCKNUT	1	Z23-10

TANCO AUTOWRAP - CUT AND START UNIT (1995)  
SLIP RING ASSEMBLY



FILE NAME: W1364-PL20

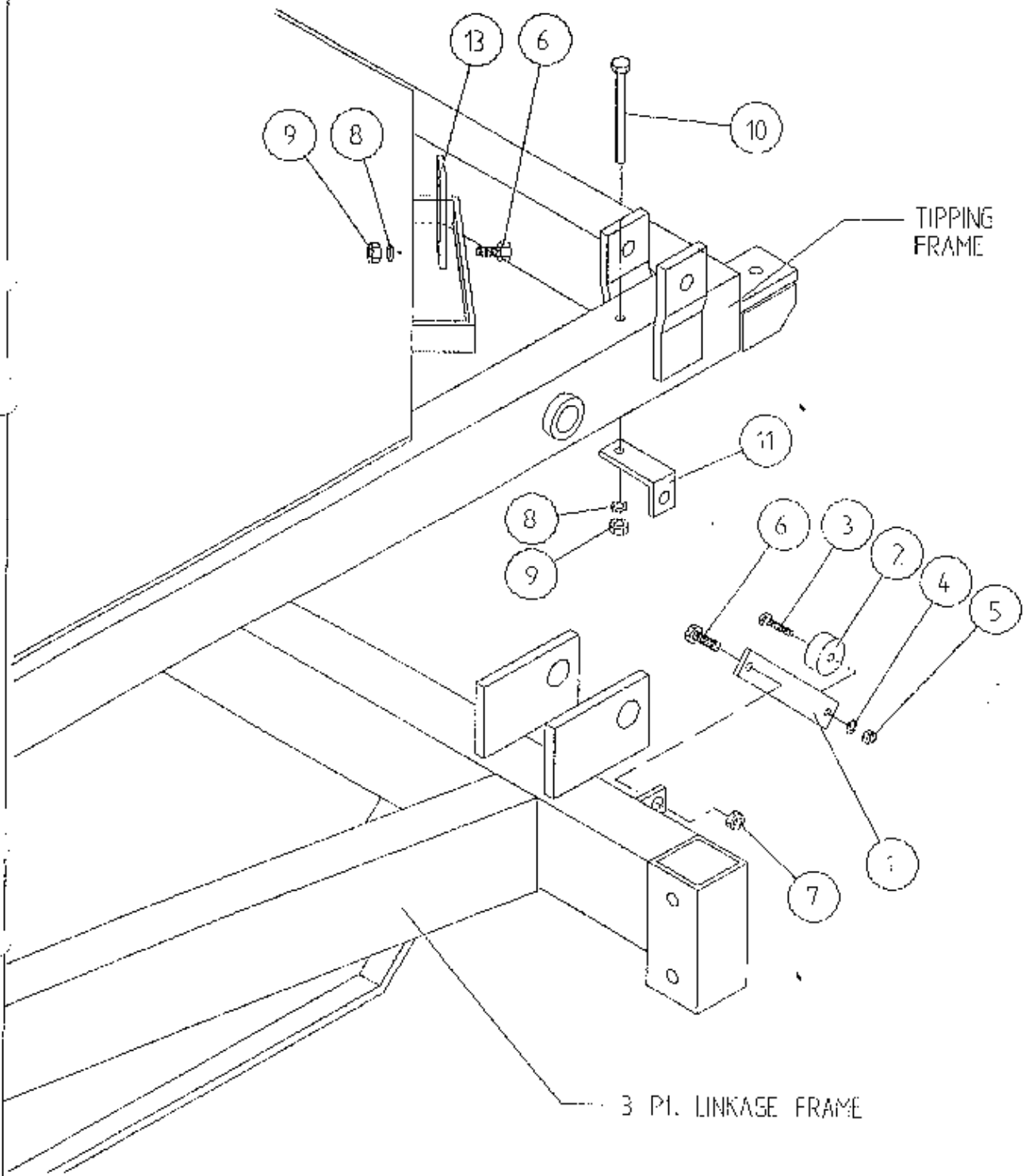
TANCO AUTOWRAP CUT AND START UNIT (1995)  
SLIP RING ASSY.

## PARTS LIST

<u>ITEM NO.</u>	<u>DESCRIPTION</u>	<u>QTY.</u>	<u>PART-NO.</u>
1.	UNDERSIDE OF TIPPING FRAME	1	WD64-TF
2.	TURNTABLE CENTRE SHAFT	1	WD64-002
3.	SLIP RING MOUNTING SLEEVE	1	WD605-161
4.	M8 GRUB SCREW x 6 mm LONG	2	Z28-007
5.	SLIP RING ASSY.	1	ZD605-308
6.	INSULATING RING	1	ZD605-350
7.	LOCKING COLLAR	1	WD60-770
8.	1 1/4" UNC HEX NUT	1	Z18-300
9.	SLIP RING MOUNTING BRACKET ASSY	1	WD605-BMB
10.	10mm DIA FLAT WASHER 1" O.D.	4	Z11-02-101
11.	10mm SPRING WASHER	4	Z12-02-10
12.	M10 HEX HD SET x 20mm	4	Z26-060S
13.	BRUSHES	2	ZD605-306
14.	INSULATOR SLEEVE	1	ZD605-302
15.	SLIP RING GUARD ASSY	1	WD605-SRG
16.	M5 GRUB SCREW	2	Z28-005



# TANCO AUTOWRAP CUT AND START UNIT (1995) SENSOR & MAGNET MOUNTING BRACKETS



FILE NAME WD64 - PL52

TANCO AUTOWRAP CUT AND START UNIT 1995SENSOR AND MAGNET MOUNTING BRACKETSPARTS LIST

ITEM NO.	DESCRIPTION	QTY.	PART-NO.
1.	MAGNET MOUNTING BRACKET	1	WD605-165
2.	MAGNET	1	D6043
3.	M6 HEX HD SET x 30mm LONG	1	Z26-022S
4.	6mm DIA FLAT WASHER	1	Z11-02-06
5.	M6 LOCKNUT	1	Z23-06
6.	M8 HEX HD SET x 25mm LONG	2	Z26-040S
7.	M8 LOCKNUT (NYLOCK)	1	Z23-08
8.	8mm DIA SPRING WASHER	2	Z12-02-08
9.	M8 HEX NUT	2	Z18-08
10.	M8 HEX HD SET x 100mm LONG	1	Z26-057S
11.	SENSOR MOUNTING BRACKET	1	WD605-58
12.	SENSOR MOUNTING FLAT	1	WD605-164